

CERTIFIED LAND CORNER RECORDATION

T 15 N, R 68 W

19	20
30	29

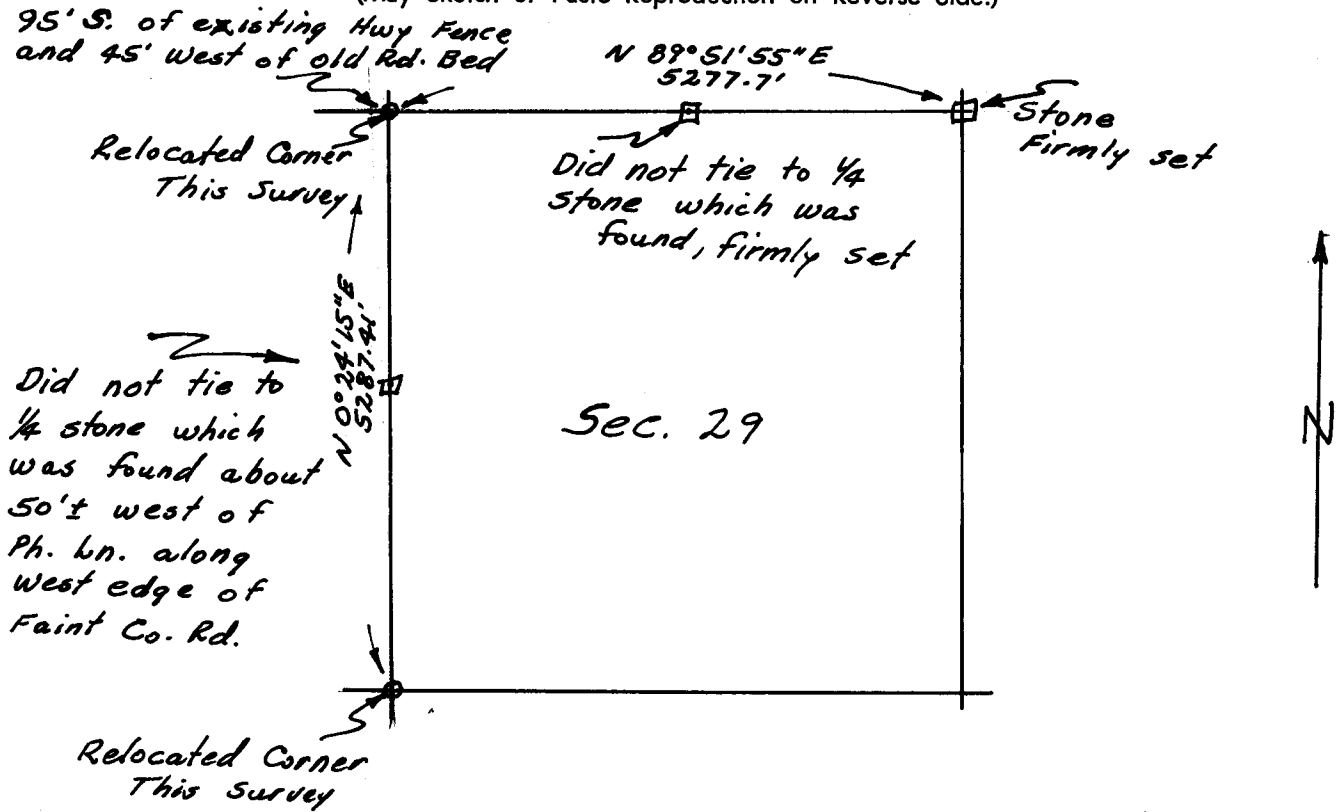
DESCRIPTION OF CORNER EVIDENCE FOUND, AND ORIGINAL RECORD (If known)
 Found Granite Boulder 14"X11"X 8" lying loose 45'+ west of tie shown on Wyo. Hwy. Dept. plans S-78(2). Stone contains 5 marks on one side and 2 marks on another side.

DESCRIPTION OF MONUMENT AND ACCESSORIES ESTABLISHED TO PERPETUATE THE ORIGINAL LOCATION OF THIS CORNER:

Using tie indicated on Wyo. Hwy. plans I relocated the corner and set #5 Rebar with SurvKap attached marked 19,20,29,30. I also reset the corner stone adjacent to and on the North side of the Rebar.

SKETCH, WITH COURSE AND DISTANCE TO ADJACENT CORNER IF DETERMINED IN THIS SURVEY.

(May Sketch or Paste Reproduction on Reverse Side.)



I, Edward C. Fry certify that I have carefully performed or reviewed the work done on the diagrammed corner as reported on this recordation form and approve the same.

Edward C. Fry
Signature of Surveyor

662
Registration No.

STATE OF WYOMING,
 Office of Clerk and Recorder,
 County of Sarasie

This "corner record" was filed for record on the 18 day of August, 1976, was noted on the cross-index plat and is assigned page No. _____, in book No. _____.

James C. Whitehead
County Official

Cross Index No. _____	T. _____	R. _____	Mer. _____
_____	T. _____	R. _____	Mer. _____
_____	T. _____	R. _____	Mer. _____
_____	T. _____	R. _____	Mer. _____
_____	T. _____	R. _____	Mer. _____
_____	T. _____	R. _____	Mer. _____
_____	T. _____	R. _____	Mer. _____